

## Welcome to the **First Edition** of our newsletter!

### Introduction to the PERFECTED research programme

PERFECTED (Peri-operative Enhanced Recovery hip Fracture Care of paTiEnts with Dementia) is a research programme aiming to improve hospital care for patients with Dementia who break their hip. This five-year study is investigating how better standards of care can be implemented across the NHS. The programme will develop and pilot evidence based interventions in the form of an Enhanced Recovery Pathway (ERP) for the care and rehabilitation of people with dementia who break their hip.

#### How will PERFECTED work?

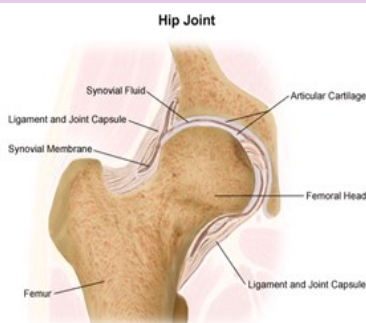
PERFECTED is comprised of four phases. The work in these phases includes: gathering examples of best practice from across the globe; working together with patients, carers and clinicians to develop and refine an ERP, and creating guidelines and bespoke training materials for the implementation of the pathway. Finally, a pilot study will be conducted in hospitals across the UK to assess the feasibility of procedures and provide information to inform a conclusive trial.

#### Progress: Phase 1 is well under way

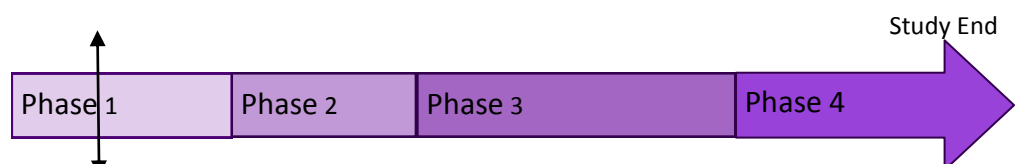
Documents providing information on many aspects of dementia care in acute settings have been obtained from hospital trusts through **Freedom of Information requests**. These documents are now being coded into themes ready to be analysed by experts.

The **Domestic and International Telephone Surveys** with health professionals have also commenced. These aim to determine the current best practice in acute settings for patients who have broken their hip and have dementia.

**PARTICIPANTS REQUIRED:** We are still recruiting telephone survey participants. We are interested in professionals working in acute settings with people who have broken their hip and have dementia. At this stage we are particularly interested in hospital based Social Workers, Occupational Therapists, Dieticians and Physiotherapists in England and Orthogeriatricians internationally. Please visit our website for details about how you can help ([www.perfected.ac.uk](http://www.perfected.ac.uk)).



### PERFECTED Timeline



Follow us on Twitter @PerfectedERP

### BBC Radio Norfolk Interview

On Wednesday 21st May Dr. Chris Fox and Dr Simon P Hammond joined Nick Conrad at BBC Radio Norfolk. They talked about dementia and the PERFECTED research Programme as part of BBC Norfolk's 'Not Forgotten' focus for Dementia Awareness Week.



### Dr. Chris Fox meets Norman Lamb MP



During Dementia Awareness Week Dr Chris Fox, the Chief Investigator for the PERFECTED Programme, was part of an expert panel, which included the Rt Hon Norman Lamb MP. The panel was hosted by BBC Radio Norfolk to discuss a variety of dementia related issues.

#### Contacts:

**Dr Chris Fox**  
Chief Investigator  
Tel: 01603 593583  
Email: [chris.fox@uea.ac.uk](mailto:chris.fox@uea.ac.uk)

**Dr Simon P Hammond**  
Programme Manager  
Tel: 01603 591460  
Email: [s.hammond@uea.ac.uk](mailto:s.hammond@uea.ac.uk)

**Ms Kath Edwards**  
Administrator (Main contact)  
Tel: 01603 591745  
Email: [kath.edwards@uea.ac.uk](mailto:kath.edwards@uea.ac.uk)